

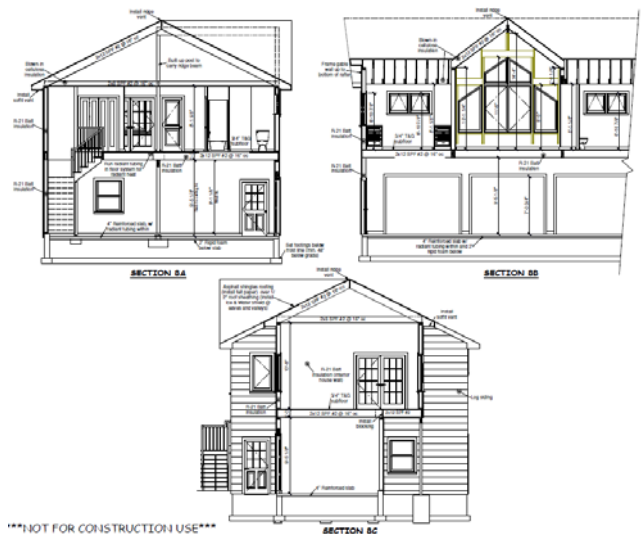
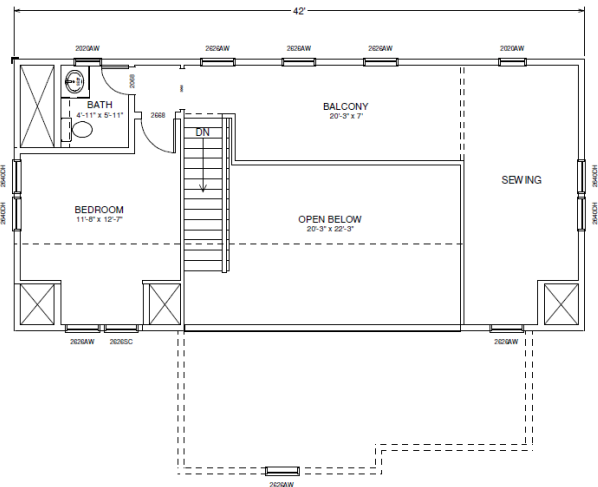
## PROS OF COMPUTER MODELING

Computer-aided drafting or CAD software allows a draftsman to do a number of visual tasks that otherwise could take a great deal of time. All of our construction drawings are created using Chief Architect® software, which offers several of these unique features for both our drawing team and customers.

### Chief Architect® Software

Some benefits of home modeling and plan layout using Chief Architect:

- Easy-to-use building tools for walls, basements, decks, roofs, stairs, and more.
- Quick turn-around time for custom kitchen and bath designs.
- Speedy generation of electrical plans with accordance to building codes.
- The ability to simultaneously draw plans in both 2D and 3D environments.
- The ability to view an accurate complete 3D model of your home.
- Fast creation of building sections and elevations from completed 3D model.
- Built-in camera and video recording tools which allow you to take a virtual walk-through of your home prior to construction.
- Photo-realistic 3D rendering.
- Built-in object library with over 10,000 household items, making it possible to meet almost any client's criteria.
- Material Painter™ application to apply colors, textures and materials from any image or website.
- Built-in terrain modeling, landscaping and site planning tools.



**Eric & Eric Drawing Services**  
6435 State Route 8  
Brant Lake, NY 12815

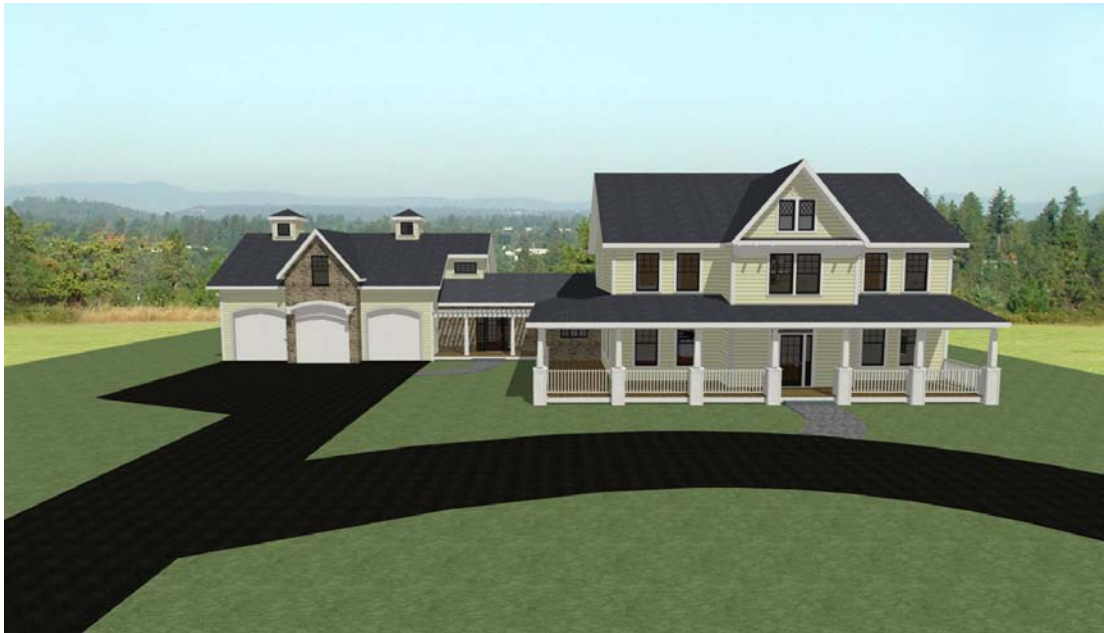
phone: (518) 494-2869  
fax: (518) 494-2901  
walt@ericeric.com



### Computer-Aided Drafting

Some benefits of CAD in general:

- Ability to draw in layers, therefore saving a great amount of time when drawing several types of layouts at once (foundation plan, individual floor plans, electrical, plumbing, furniture, etc.). The ability to turn various layers on and off to get the desired view is much more efficient than the alternative of drawing each individual view.
- Standard line types, line weights, borders, fonts, and notes can be set to a drawing template for use by all drawing team members, ensuring consistency.
- Revisions to a plan can usually be accomplished in much less time when compared to manual drafting.
- Items can be grouped together to form blocks, which can be saved for future use on other projects, therefore preventing the need to draw the same arrangement twice.



**Eric & Eric Drawing Services**  
6435 State Route 8  
Brant Lake, NY 12815

phone: (518) 494-2869  
fax: (518) 494-2901  
walt@ericeric.com