

PROS OF PLUMBING PLANS

Plumbing plans are sometimes included in drawing sets for residential and commercial construction projects. They show the complete piping layout and path of water distribution throughout the entire building in regards to drinking, sanitation, heating and cooling.

Requirements of plumbing plans:



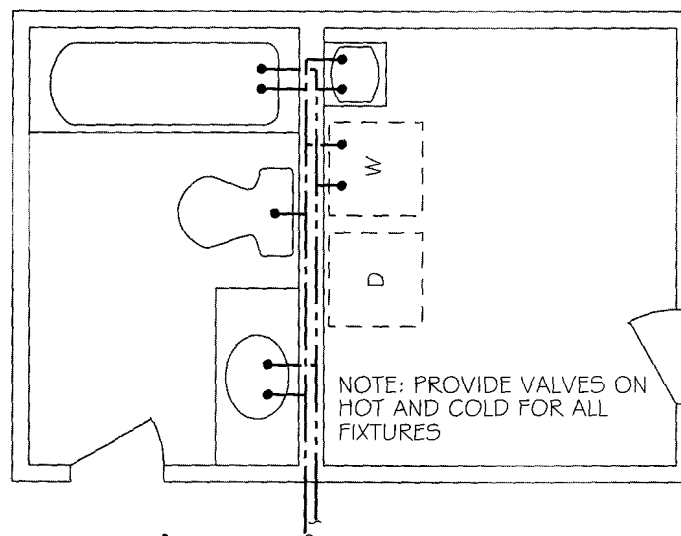
The following are typical of a set of plumbing plans.

- Lines and symbols representing all piping, fittings, valves and fixtures.
- Symbol legend and general notes.
- Fixture schedule specifying make and model for each item.
- Information pertaining to the water heater.
- Piping for natural gas, if applicable.
- Fire sprinkler system piping, heads and notes, if applicable.



Things to Consider

- All plumbing systems can be broken down into two categories: supply and drainage. Water in the supply system is pressure-fed to ensure proper flow, while the drainage system uses gravity to remove both liquid and solid wastes. It is critical that both operate as a single unit with the associated fixture in order to ensure adequate service.
- Consider the needed water supply, pressure, and farthest distribution point. Plumbing must be sized so to properly deliver the required amount of water at an acceptable pressure to every spigot or faucet within the building.
- Plan your plumbing with the shortest possible pipe runs, especially for areas of high water usage like kitchens and baths. This will cut down on the amount of water that must fill the pipe before exiting the faucet, thus saving both water and energy.



Eric & Eric Drawing Services
6435 State Route 8
Brant Lake, NY 12815

phone: (518) 494-2869
fax: (518) 494-2901
walt@ericeric.com